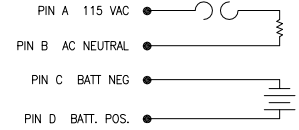
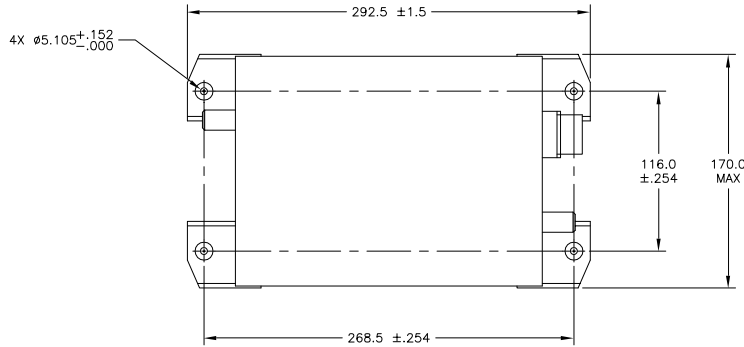


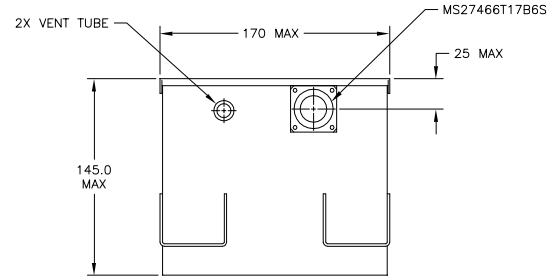
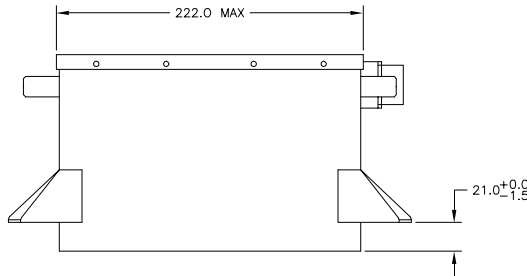
NOTES: UNLESS OTHERWISE SPECIFIED

- BATTERY CONFORMS TO THE REQUIREMENTS OF MIL-PRF-8565 AND MIL-PRF-8565/4, QUALIFIED PRODUCTS LISTED.
- SEE DRAWING NO. CB-00165 AND PROCEDURE P-1000 FOR ASSEMBLY AND TEST INSTRUCTION. PROCEDURES AND ASSEMBLY DRAWINGS ARE FOR INTERNAL USE ONLY.
- BATTERY WEIGHT: 11.8 kg MAXIMUM
- FOR DIMENSIONS NOT SHOWN, SEE MILITARY SPECIFICATIONS.

REVISIONS			
REV	DESCRIPTION	DATE	APPROVED
A	UPDATED NOTE 1, FIXED CAGE CODE	1/31/03	JBT



CONNECTOR SCHEMATIC DIAGRAM



ENVELOPE DRAWING

QTY REQ	CAGE CODE	PART OR IDENTIFYING NO.	NOMENCLATURE OR DESCRIPTION	MATERIAL SPECIFICATION	ITEM NO.
PARTS LIST					
UNLESS OTHERWISE SPECIFIED DIMENSIONS ARE IN INCHES TOLERANCES ARE:		CONTRACT NO.			
FRACTIONS	DECIMALS	ANGLES	CONCORDE BATTERY CORPORATION		
* JXX #	* #	* #	2009 SAN BERNARDINO RD., W. COVINA, CA 91790		
*** #			TITLE BATTERY, STORAGE, AIRCRAFT		
		APPROVALS	DATE	24 VOLT, 7.5 AH	
		DRAWN	B. PORTER	6/28/99	
TREATMENT	NONE	CHECKED	AMIII	8/5/99	
FINISH	NONE	APPROVED	JBT	8/6/99	
SIMILAR TO	ACT INT	ISSUED	AT	2/6/03	
		SCALE	1/2	DWG NO. D8565/4-1	REV A
				SHEET	1 OF 1

ENGINEERING COPY CBFE003