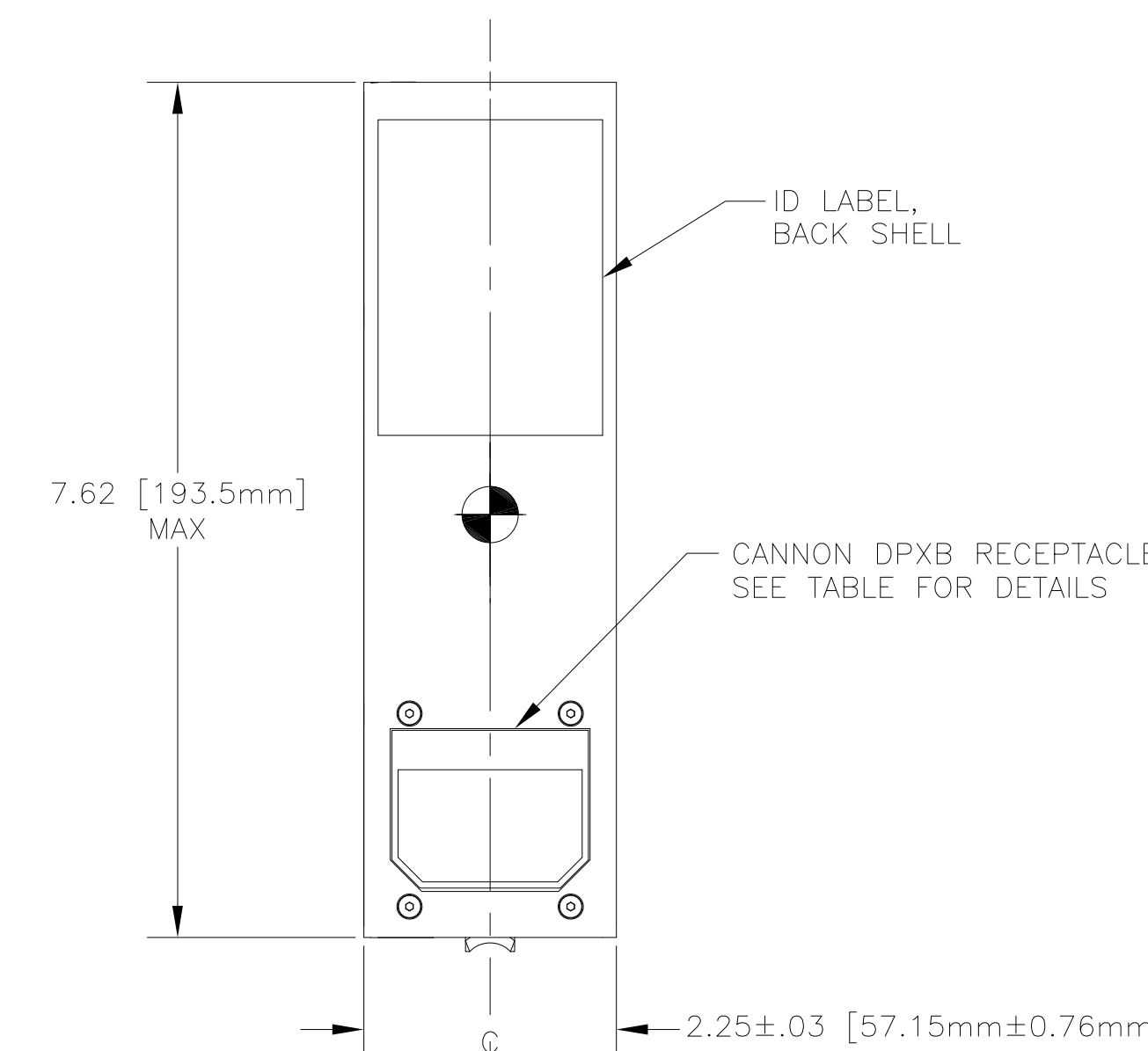
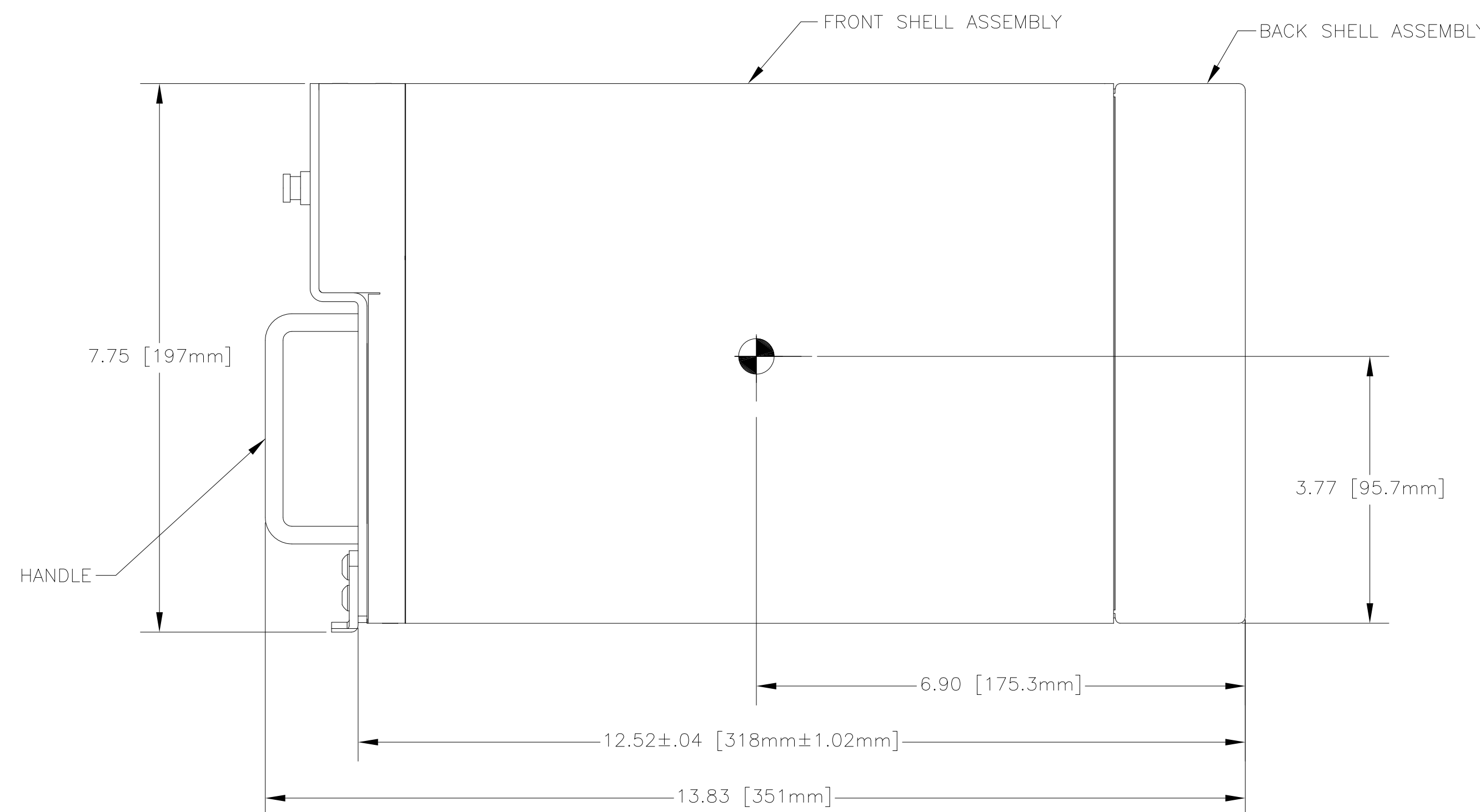
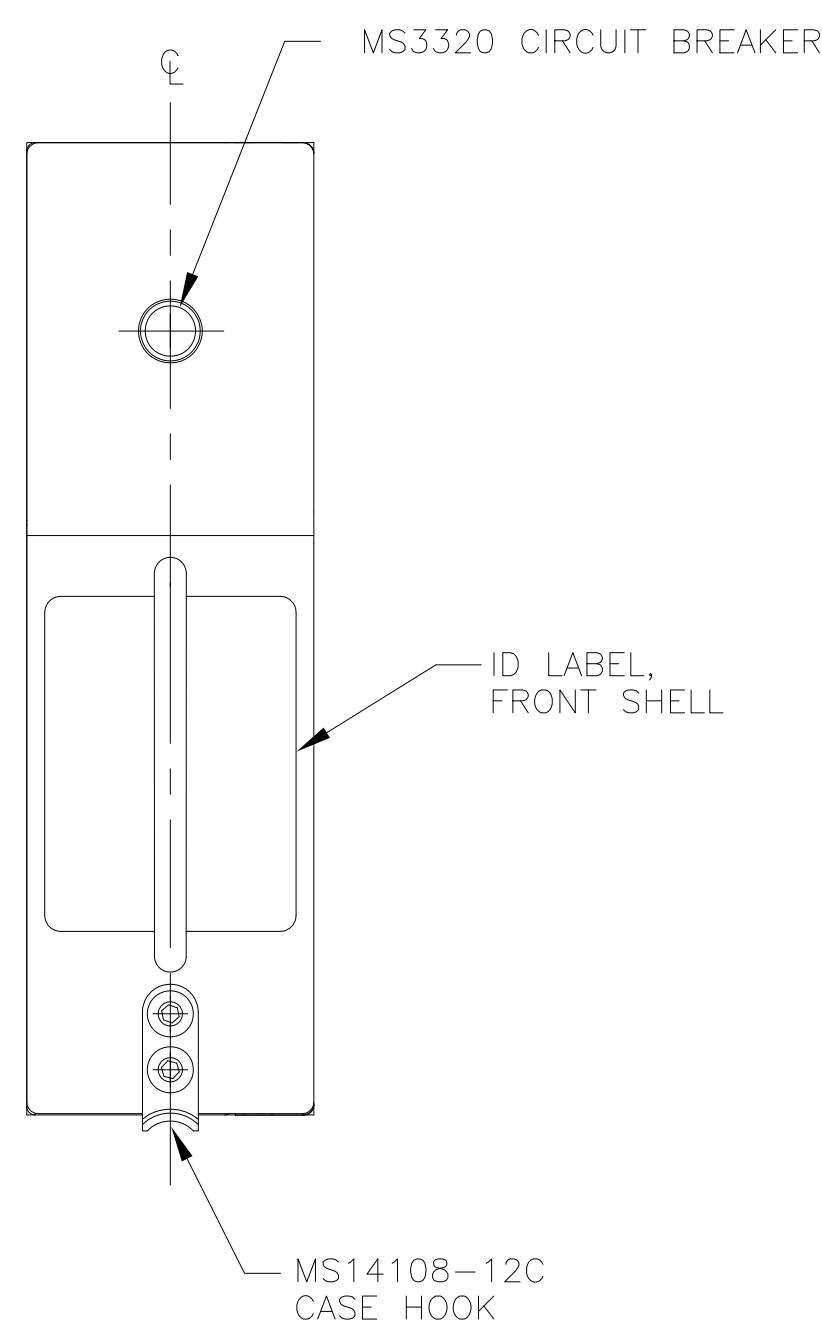
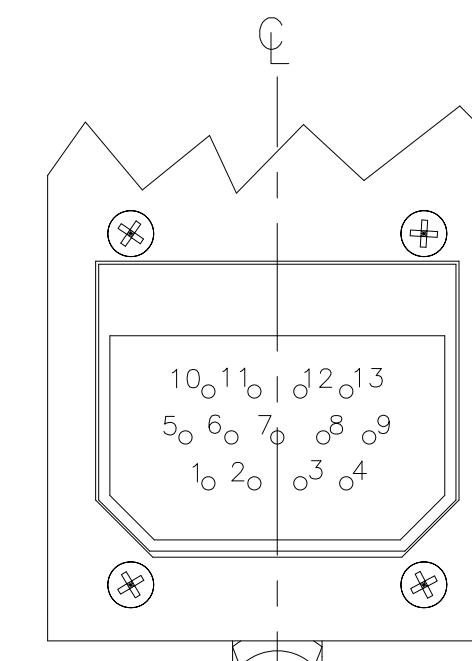
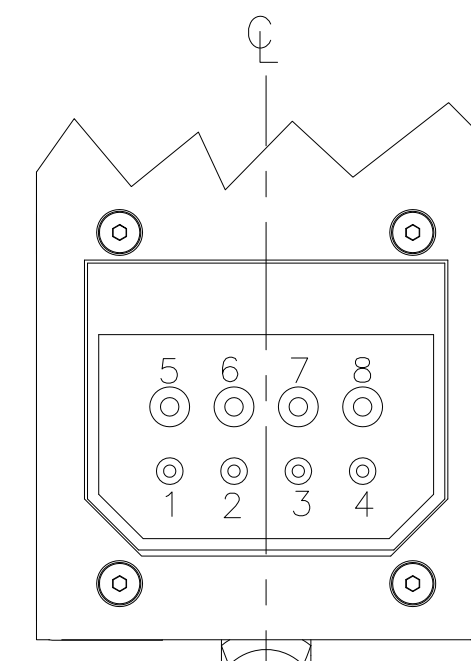


NOTES: UNLESS OTHERWISE SPECIFIED

- BATTERY CONFORMS TO DESIGN THE REQUIREMENTS OF 14 CFR PART 23.1353, 25.1353(c), 27.1353, 29.1353(c)
- MANUFACTURED AND INSPECTED IAW AS9100 QUALITY SYSTEM REQUIREMENTS.
- SEE DRAWING NUMBER CB-00296 AND PROCEDURE P-1000 FOR ASSEMBLY AND TEST INSTRUCTION. PROCEDURES AND ASSEMBLY DRAWINGS ARE FOR INTERNAL USE ONLY
- BATTERIES ARE RATED IAW INTERNATIONAL ELECTROTECHNICAL COMMISSION STANDARD 60952-1 AND RTCA STANDARD DO-293, UNLESS OTHERWISE NOTED.
- THIS BATTERY IS NOT RATED FOR "ENGINE STARTING - HIGH RATE PERFORMANCE"
- CASE SIZE: ARINC 404, 1/4 ATR SHORT
- ALTERNATE CIRCUIT BREAKERS ARE AVAILABLE UPON REQUEST.

REVISIONS			
REV	DESCRIPTION	DATE	APPROVED
A	REMOVED -3 & -4	12/12/06	JBT
B	ADDED CAP AT -18 & -30	6/19/07	JBT
C	ADDED -5 & -6, REVISED NOTE 4	7/15/08	JBT
D	UPDATED RATINGS PER TSO TEST	1/5/09	JBT
E	ADDED CG, ID LABEL LOCATIONS, REV NOTE 2	2/13/09	JBT
F	HEATER: 6A MAX WAS 2A MAX	5/21/09	JBT

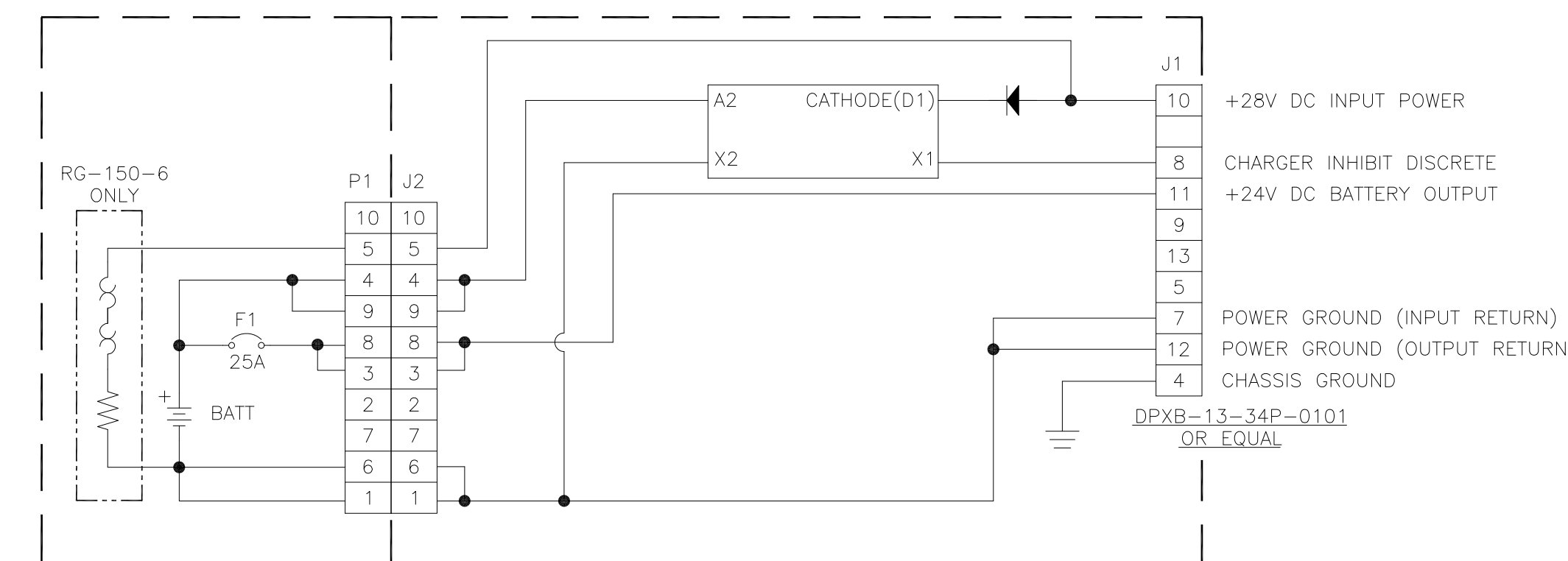
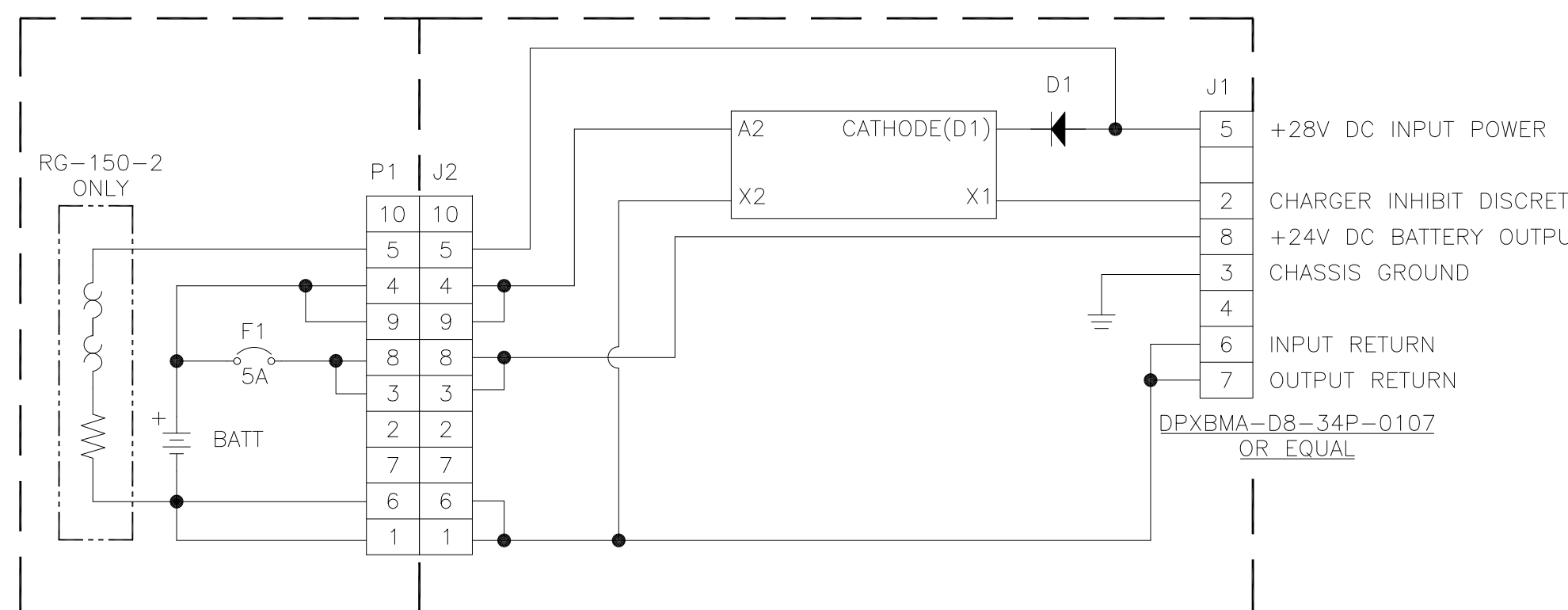


RG-150-1/-2 FRONT SHELL CB-00298

RG-150-1/-2 BACK SHELL CB-00299

RG-150-5/-6 FRONT SHELL CB-00298

RG-150-5/-6 BACK SHELL CB-00299



PART NUMBER	RG-150-1	RG-150-2	RG-150-5	RG-150-6
MAXIMUM WEIGHT	14.0 LBS [6.4 KG]			
RATED CAPACITY, C ₁	3.5 AH			
CAPACITY, -18°C (0°F)	3.0 AH	3.5 AH	3.0 AH	3.5 AH
CAPACITY, -30°C (-22°F)	2.0 AH	3.5 AH	2.0 AH	3.5 AH
INPUT	28 VDC NOM.			
MAXIMUM INRUSH CURRENT	18 AMPS			
RECEPTACLE	DPXBMA-D8-34P-0107 OR EQUAL		DPXB-13-34P-0101 OR EQUAL	
OUTPUT CIRCUIT BREAKER	5 A		25 A	
INTERNAL DC HEATER	NO	6A MAX @ 28 VDC	NO	6A MAX @ 28 VDC

90% CAPACITY IS REACHED WITHIN 1 HOUR WHEN POWERED FROM THE 28V DC BUS. POWER APPLIED TO HEATERS FOR 1 HOUR PRIOR TO TEST AT LOW TEMPERATURES.

ENVELOPE DRAWING

QTY REQD	CAGE CODE	PART OR IDENTIFYING NO.	NOMENCLATURE OR DESCRIPTION	MATERIAL SPECIFICATION	ITEM NO.
PARTS LIST					
UNLESS OTHERWISE SPECIFIED DIMENSIONS ARE IN INCHES TOLERANCES ARE:		CONTRACT NO.		CONCORDE BATTERY CORPORATION	
FRACTIONS .XX ±.06 ±1'		APPROVALS		2009 SAN BERNARDINO RD, W. COVINA, CA 91790	
.XXX ±.030		DATE		TITLE BATTERY, VRSLA, 24 VOLT, RG-150 SERIES	
TREATMENT	NONE	CHECKED	AMIII	6/13/05	SIZE
FINISH	NONE	APPROVED	JBT	6/16/05	D 63017
SIMILAR TO	ACT WT	ISSUED	NS	5/28/09	SCALE NONE
				DWG NO.	RG-150
				REV	F
				SHEET	1 OF 1